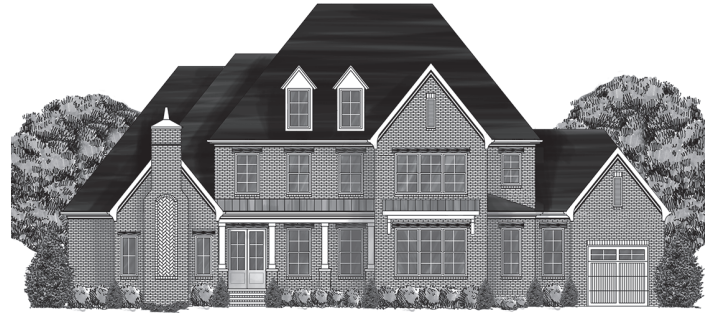


NOTTINGHAM III



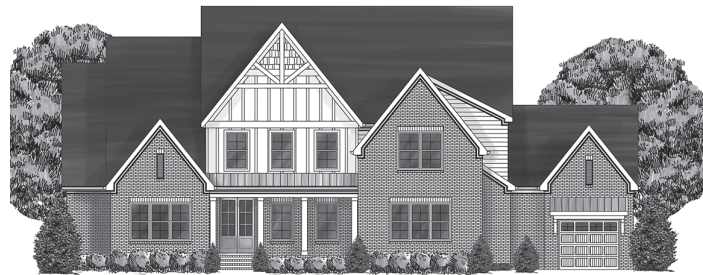
Elevation C



Elevation G



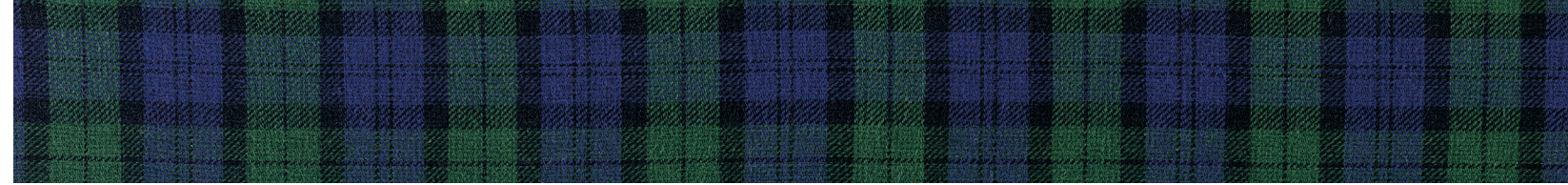
Elevation D



Elevation H



Elevation E



NOTTINGHAM III



Elevation A



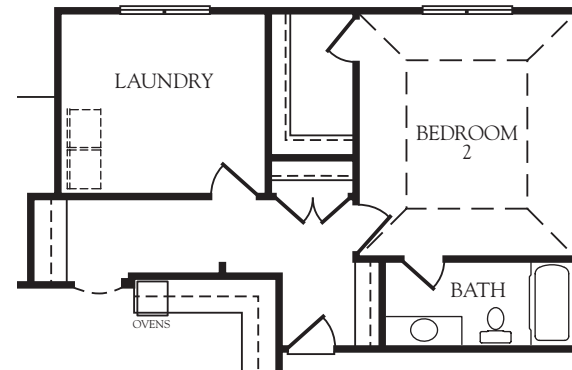
Illustrations shown are artist concepts. Turnberry Homes reserves the right to change or amend plans and specifications without prior notice. Specifications may vary per plan. Information is deemed to be correct but not guaranteed. Copyright © 2019 Turnberry Homes. Rev. 3/2024



NOTTINGHAM III

Represents Elevation A

Optional Bedroom 2 arrangement



First Floor



5 Bedrooms
4 1/2 Baths

First floor:	3,344 sq.ft.
Second floor:	1,560 sq.ft.
Total heated area:	4,904 sq.ft.
Unfinished storage:	175 sq.ft.
Garage:	893 sq.ft.
Porches:	459 sq.ft.

This represents Nottingham III only. Other elevations may change the interior room dimensions and size of home. Please see sales representative for details. Square footage calculated from outside exterior walls. Second floor two story space counted as half. All calculations are approximate.

Second Floor

