

ST. ANDREWS COURTYARD



Elevation F



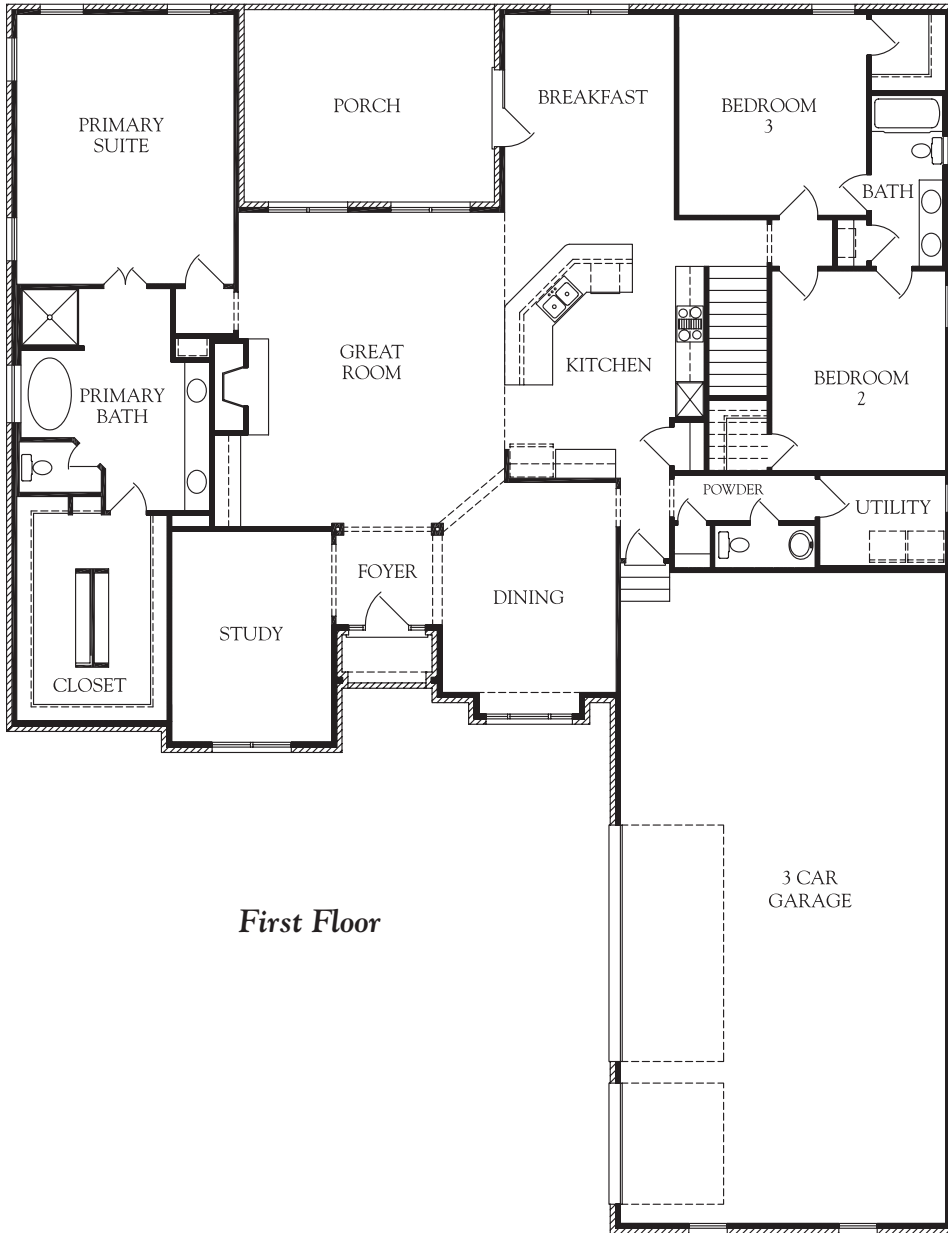
Elevation A



ST. ANDREWS COURTYARD

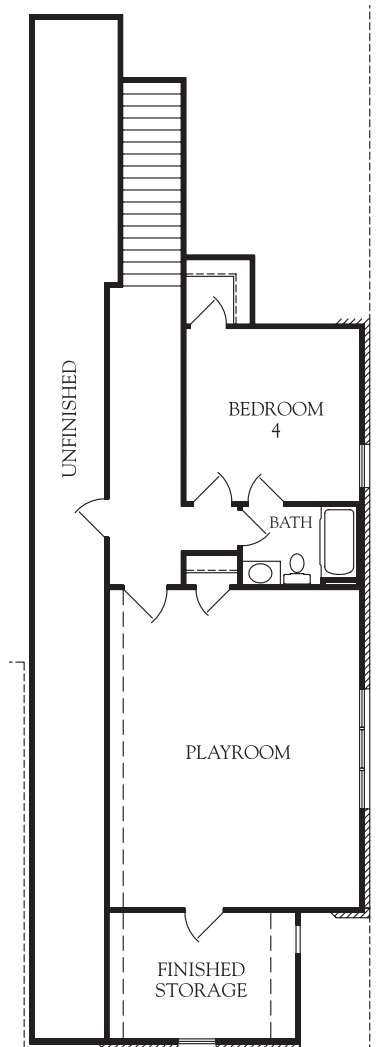
4 Bedrooms
3 1/2 Baths

First floor:	2,793 sq.ft.
Second floor:	954 sq.ft.
Total heated area:	3,747 sq.ft.
Garage:	1,097 sq.ft.
Porches:	261 sq.ft.



First Floor

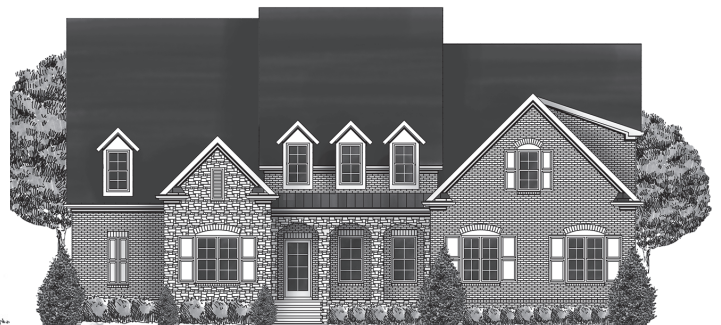
This represents Elevation A only. Other elevations may change the interior room dimensions and size of home. Please see sales representative for details. Square footage calculated from outside exterior walls. Second floor two story space counted as half. All calculations are approximate.



Second Floor



Elevation B



Elevation C