

NEWCASTLE



Elevation A



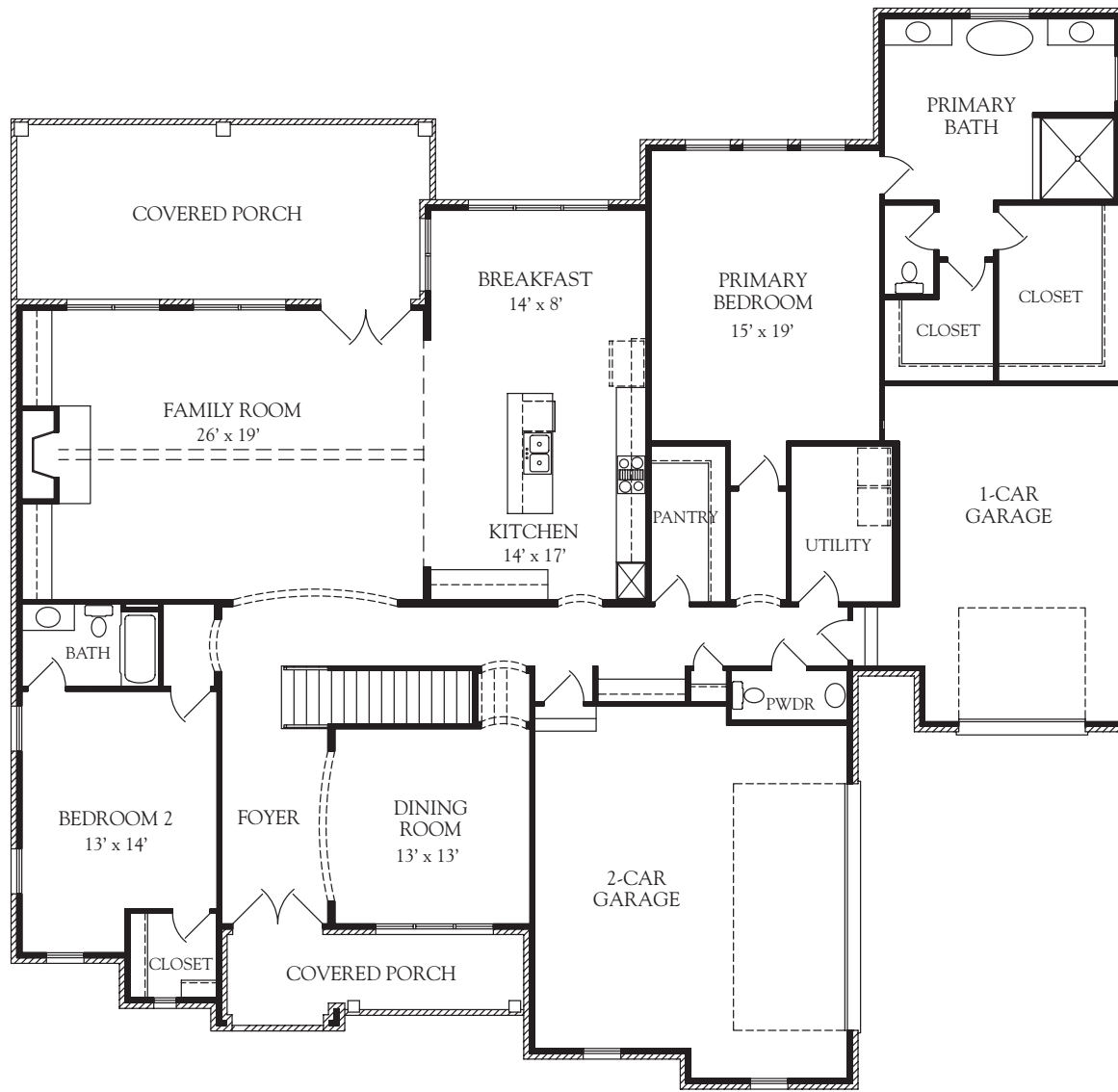
NEWCASTLE
Represents Elevation A

5 Bedrooms
5 1/2 Baths

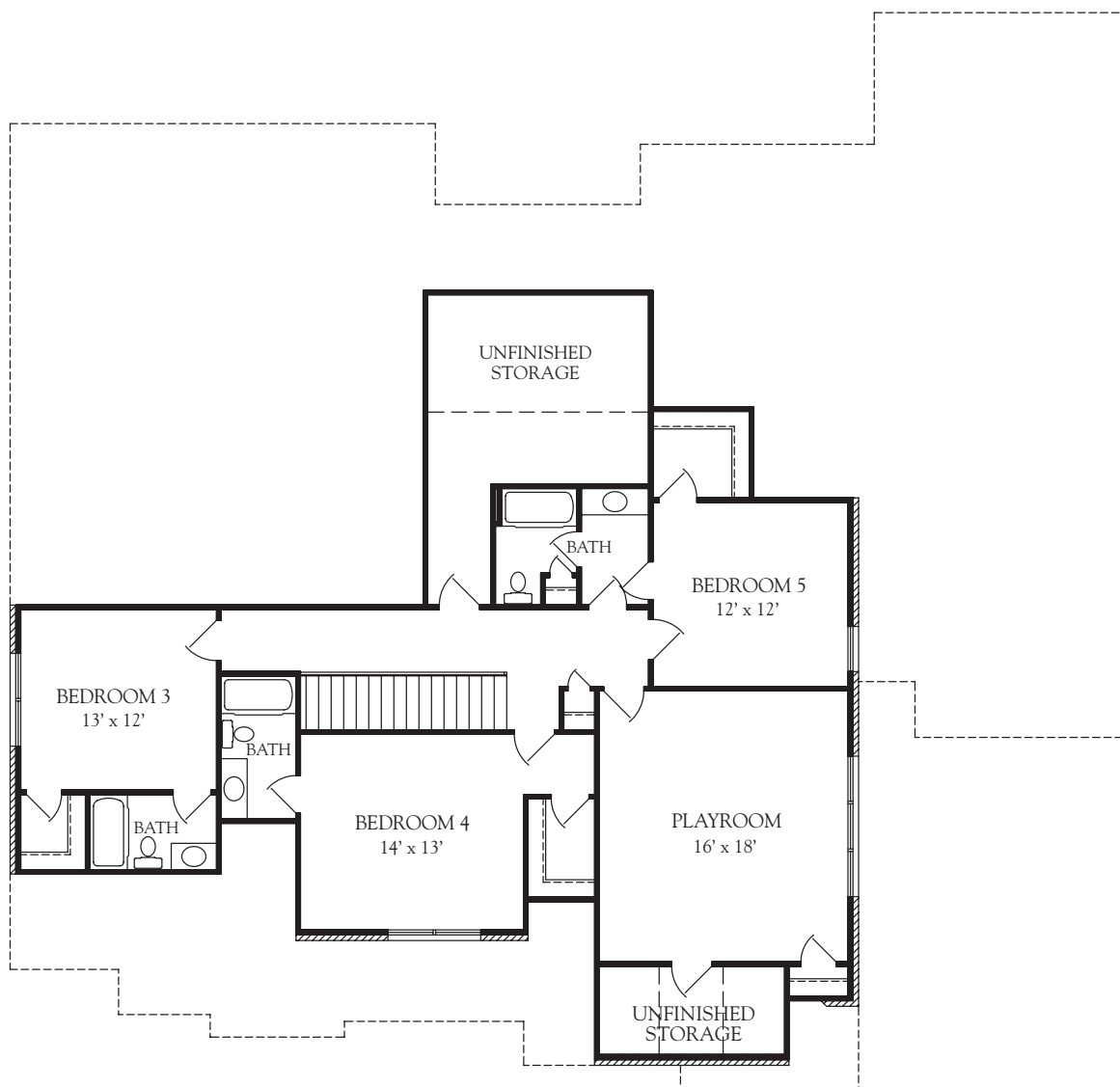
First floor:	2,835 sq.ft.
Second floor:	1,387 sq.ft.
Total heated area:	4,222 sq.ft.

Unfinished storage:	315 sq.ft.
Garage:	892 sq.ft.
Porches:	448 sq.ft.
Total covered:	6,968 sq.ft.

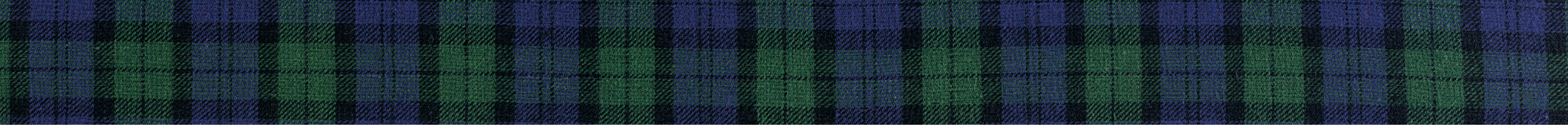
First Floor



Second Floor



This represents Elevation A only. Other elevations may change the interior room dimensions and size of home. Please see sales representative for details. Square footage calculated from outside exterior walls. Second floor two story space counted as half. All calculations are approximate.



Illustrations shown are artist concepts. Turnberry Homes reserves the right to change or amend plans and specifications without prior notice. Specifications may vary per plan. Information is deemed to be correct but not guaranteed.
Copyright © 2024 Turnberry Homes. Rev. 6/2026